



Special Cameras



Assembly Tutorial

MiniJib Ronin w/ Teris kit tube

Table of Contents index

Pages

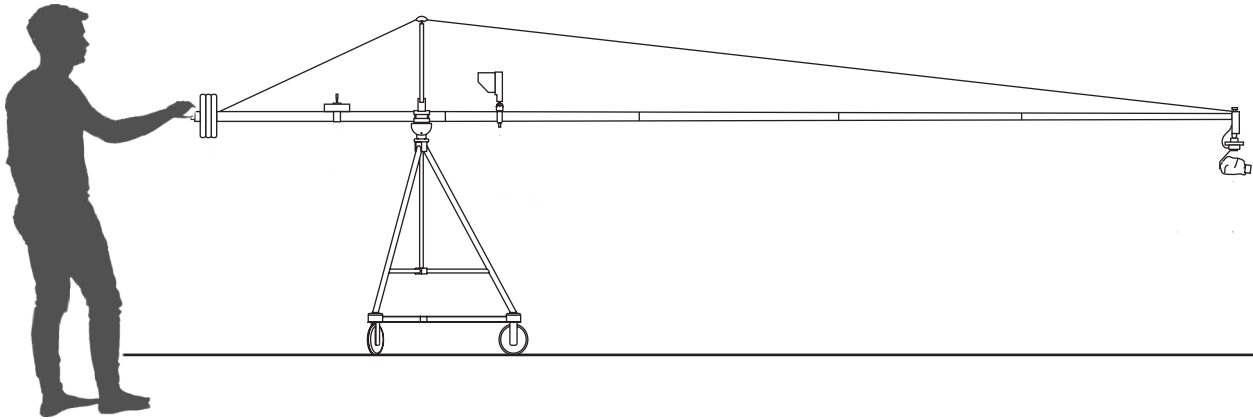
1. Introduction Assembly Tutorial	2
• Overview of the MiniJib Ronin Teris Kit	
• Key Components	
2. Inside-the-box and Out-of-the-box	3-4-5
• Detailed list of components	
• Initial setup instructions	
• Introduction	6
• Installation procedure	7-8
3. LinkBox STD presentation	9
• LinkBox features & capabilities	
• RCP003 presentation & capabilities	9-10
4. RCP003 Multi-Camera Setup	10
• Detailed steps for setting up RCP003 with multiple cameras	11
• IP address and port settings	
5. Bluetooth Pairing Instructions	12
• Pairing Ronin S Gimbal with smartphones	
• Compatible devices and app download	
6. Addendum: Power Supply Changes	13-14-15
• Updated power supply setup for joystick and monitors	
• RCP003 configuration to 6 minicams Dreamchip Air & miniZoom	



Special Cameras

miniJib

Assembly Tutorial



MiniJib kit contains 5 volumes:

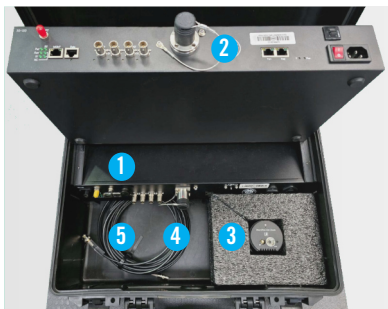
- A** 1 - HPRC2500 - LinkBox STD
- B** 1 - HPRC2500 - Ronin Head
- C** 1 - HPRC2500 - Dual Monitors
- D** 1 - HPRC2400 - RCP003
- E** 1 - HPRC2350 - Weights (max 20Kg)
- F** 1 - Teris JQ50-II Carbon Fiber Mini Jib

Inside-the-box's



Inside-the-box **A**

A 1 - HPRC2500 - LinkBox STD



- 1 FieldBox STD
- 2 Ccu STD
- 3 miniCam (Dreamchip miniZoom i.e)
- 4 miniBNC to BNC cable - connects minicam to fieldBox sdi in
- 5 Cam to FieldBox cable (Hirose plug)

Out-of-the-box

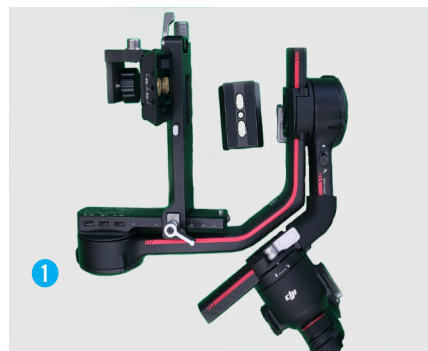


Inside-the-box **B**

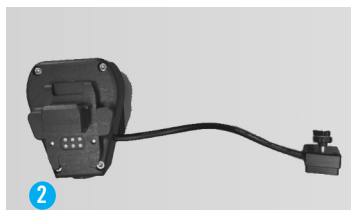


B 1 - HPRC2500 - Kit Stabilized head

Out-of-the-box



1 Ronin Head



2 Ronin Head Mount



3 Joystick PTR



4 Cable miniXLR fem to miniXLR male - connects Joystick to fieldBox



5 Cable Hirose plug - connects Joystick to Head Mount

Inside-the-box **C**



C 1 - HPRC2500 - Dual Monitors

Out-of-the-box



- 1** Monitor 1 PGM
- 2** Monitor 2 Local video cam
- 3** Monitors support plate with clamp
- 4** Power supply dual w/ XLR adaptor
- 5** Monitors & sunshade x2

Inside-the-box **D**



D 1 - HPRC2400 - RCP003

Out-of-the-box



- 1** RCP003 - Remote Camera Control Panel
- 2** Power Supply

Inside-the-box **E**



- 1 Mix weights - max 20Kgs (not included)

E 1 - HPRC2350 - Weights (max 20Kg)

Out-of-the-box

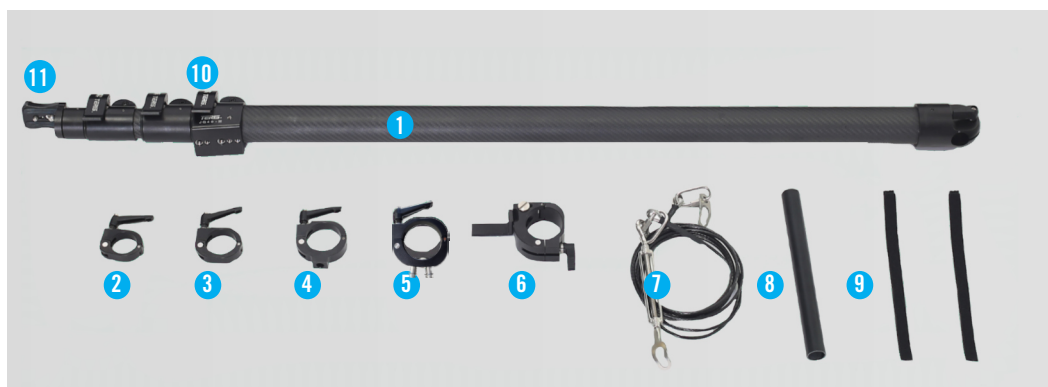


Inside-the-box **F**

- F** 1 - Teris JQ50-II Carbon Fiber Mini Jib

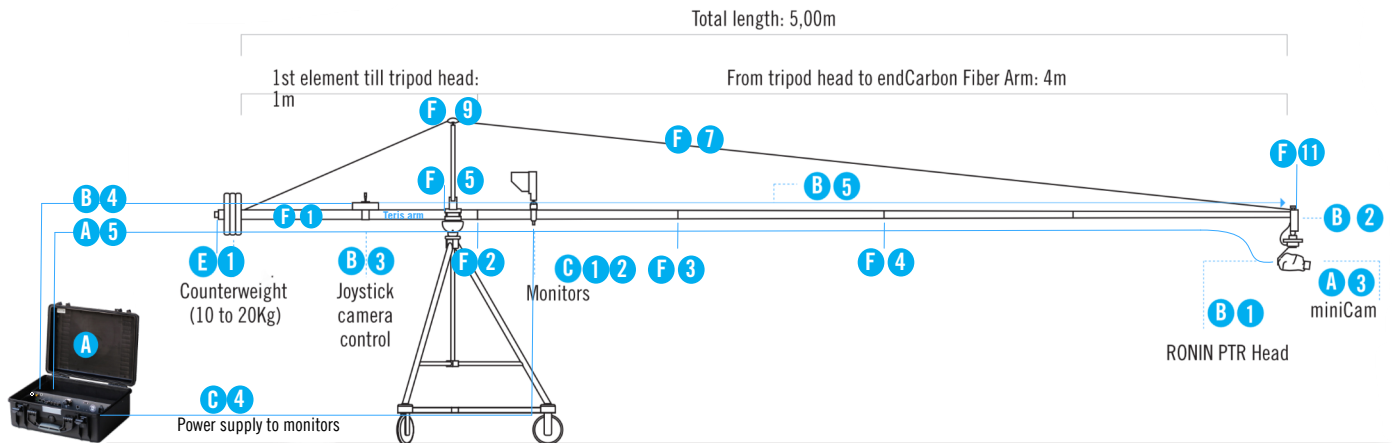


Out-of-the-box



- | | |
|--------------------------------------|---|
| 1 1 - Teris JQ50-II Carbon Fiber arm | 6 1 - Non-slip snap ring bracket /Optional Monitors rig |
| 2 1 - Non-slip snap ring bracket | 7 1 - Steel cable |
| 3 1 - Non-slip snap ring bracket | 8 1 - Counterweight pole to weight level |
| 4 1 - Non-slip snap ring bracket | 9 2 - Tension mini poles |
| 5 1 - Mount control handle | 10 1 - Head mount to tripod |
| | 11 1 - Mini plate - to attached O4S Head mount Ronin |

Introduction



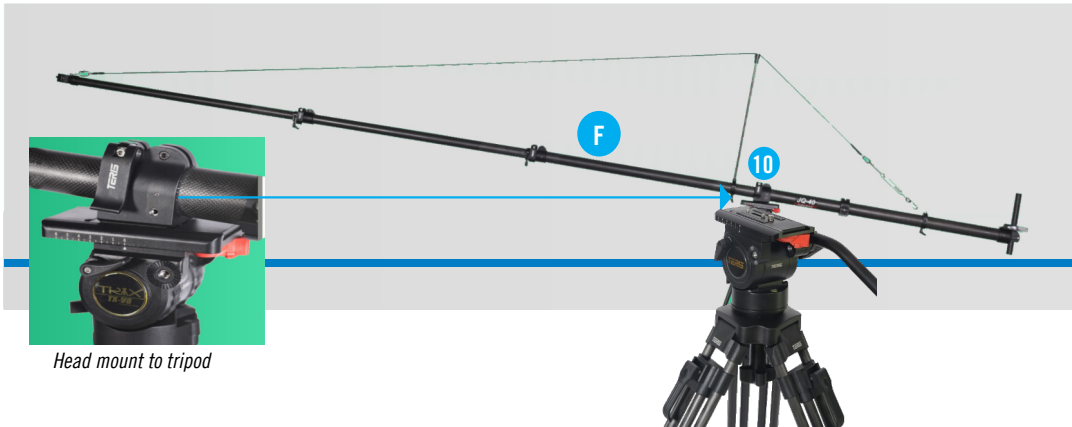
- | | |
|---|--|
| <p>A 1 - HPRC2500 - LinkBox STD</p> <p>1 FieldBox STD</p> <p>2 Ccu STD</p> <p>3 miniCam (Dreamchip miniZoom i.e)</p> <p>4 miniBNC to BNC cable - connects minicam to fieldBox sdi in</p> <p>5 Cam to FieldBox cable (Hirose plug)</p> <p>B 1 - HPRC2500 - Kit Stabilized head Ronin</p> <p>1 Ronin Head</p> <p>2 Ronin Head Mount w/ RSA Communication Port cable</p> <p>3 Joystick PTR</p> <p>4 Cable miniXLR fem to miniXLR male - connects Joystick to fieldBox to power supply</p> <p>5 Cable Hirose plug - connects Joystick to Head Mount</p> <p>C 1 - HPRC2500 - Dual Monitors</p> <p>1 Monitor 1 PGM</p> <p>2 Monitor 2 Local cam</p> <p>3 Monitors support plate with clamp</p> <p>4 Power supply dual w/ XLR adaptor</p> <p>5 Monitors sunshade x2</p> | <p>D 1 - HPRC2400 - RCP003</p> <p>1 RCP003 - Remote Camera Control Panel</p> <p>2 Power Supply</p> <p>E 1 - HPRC2350 - Weights (max 20Kg)</p> <p>1 Mix weights - max 20Kgs (not included)</p> <p>F 1 - Teris JQ50-II Carbon Fiber Mini Jib</p> <p>1 1 - Teris JQ50-II Carbon Fiber arm</p> <p>2 1 - Non-slip snap ring bracket</p> <p>3 1 - Non-slip snap ring bracket</p> <p>4 1 - Non-slip snap ring bracket</p> <p>5 1 - Mount control handle</p> <p>6 1 - Non-slip snap ring bracket /Optional Monitors rig</p> <p>7 1 - Steel cable</p> <p>8 1 - Counterweight pole to weight level</p> <p>9 2 - Tension mini poles</p> <p>10 1 - Head mount to tripod</p> <p>11 1 - Mini plate - to attached O4S Head mount Ronin</p> |
|---|--|

Installation procedure

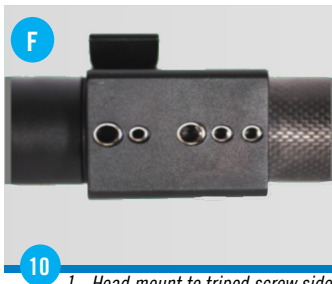
Mini Jib arm Teris JQ50-II Carbon Fiber

F

After mounting on tripod, using head mount coupled to bridge plate, extend to desired length



Head mount to tripod



10 1 - Head mount to tripod screw side

1 - Put 1/4 and 3/8 screw of the head plate mount to the jib hole. Put the jib on the tripod head



10 2 - Head mount to tripod

2 - Open three levers to extend three arms



8 3 - Counterweight lever

3 - Install counterweight pole to weight level in the hole at the end of the Teris pole, and lock it



5 4 - Lock telescopic arm bracket

4 - Lock the bracket to prevent arm contraction after cable tensioned.



9 5 - Cable tension poles on head mount

5 - Insert cable tension poles on the holes at the head mount



4 3 2 6 - Lock telescopic arm bracket

6 - Lock non-slip snap ring at second and third locking joint of jib



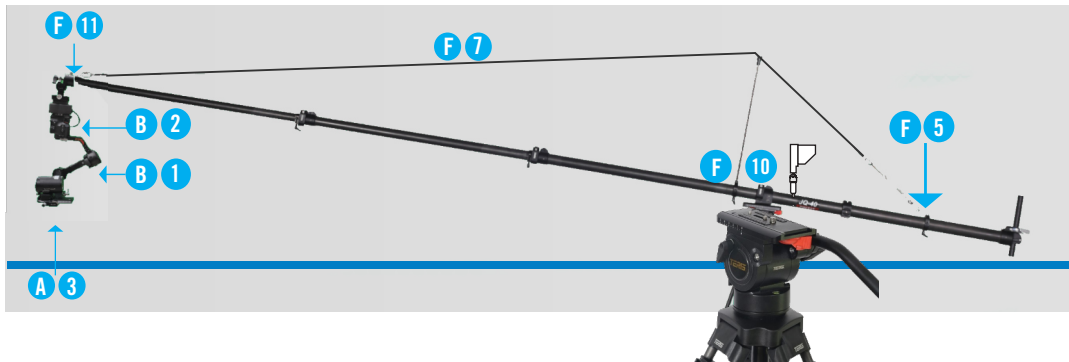
B3 - PTR Joystick control

7 - B3 - Attached the PTR Joystick control into the Teris pole. Use the included bracket w/ adjust screws, to place it on the right position

Installation procedure

Mini Jib arm Teris JQ50-II Carbon Fiber

Hang the steel cable tension as in the figure below



Front steel tension cable hang

8 - Hang one end of the tension cable on the pin at the top of jib arm



Rear steel tension cable hang

9 - Hang both end of the tension cable at the pin Mount control handle



Ronin Head Mount

10 - Plug the O4S Head mount unit with plate side, into the Teris arm bridge



O4S Head mount to Teris plate

11 - Attach O4S head mount to Teris bridge plate & lock tight untill feels secured



Attach Head unit module to Ronin

12 - Attach the O4S head unit into Ronin gimbal

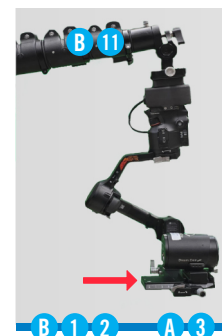


13 - Plug the wired module to Ronin RSA Communication Port using the provided screws



Minicam installation

14 - Plug the mini plate from the gimbal to your minicam using the included screw



Mount the minicam at the Ronin

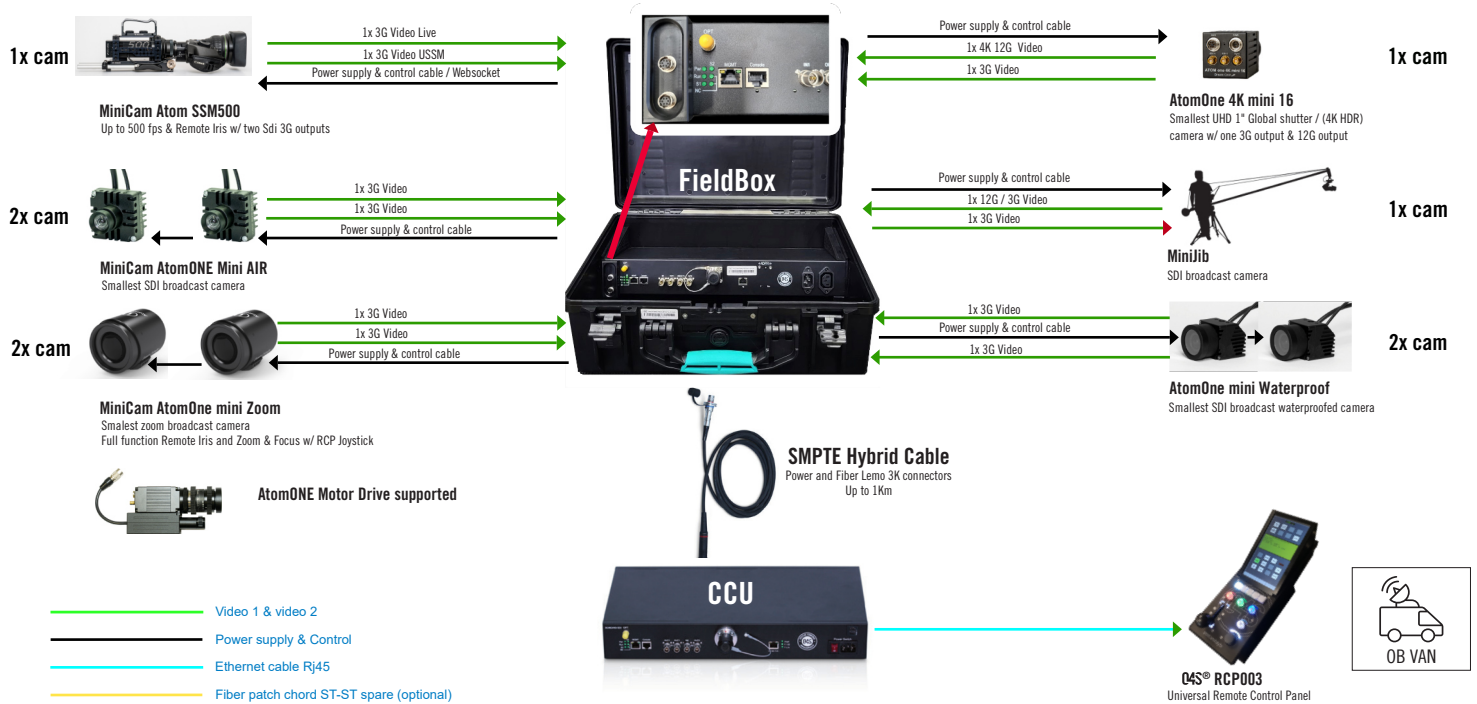
14 - Slide the mini plate towards gimbal support & lock it. Make sure to set gimbal well balanced



Dual 3G Sdi monitor

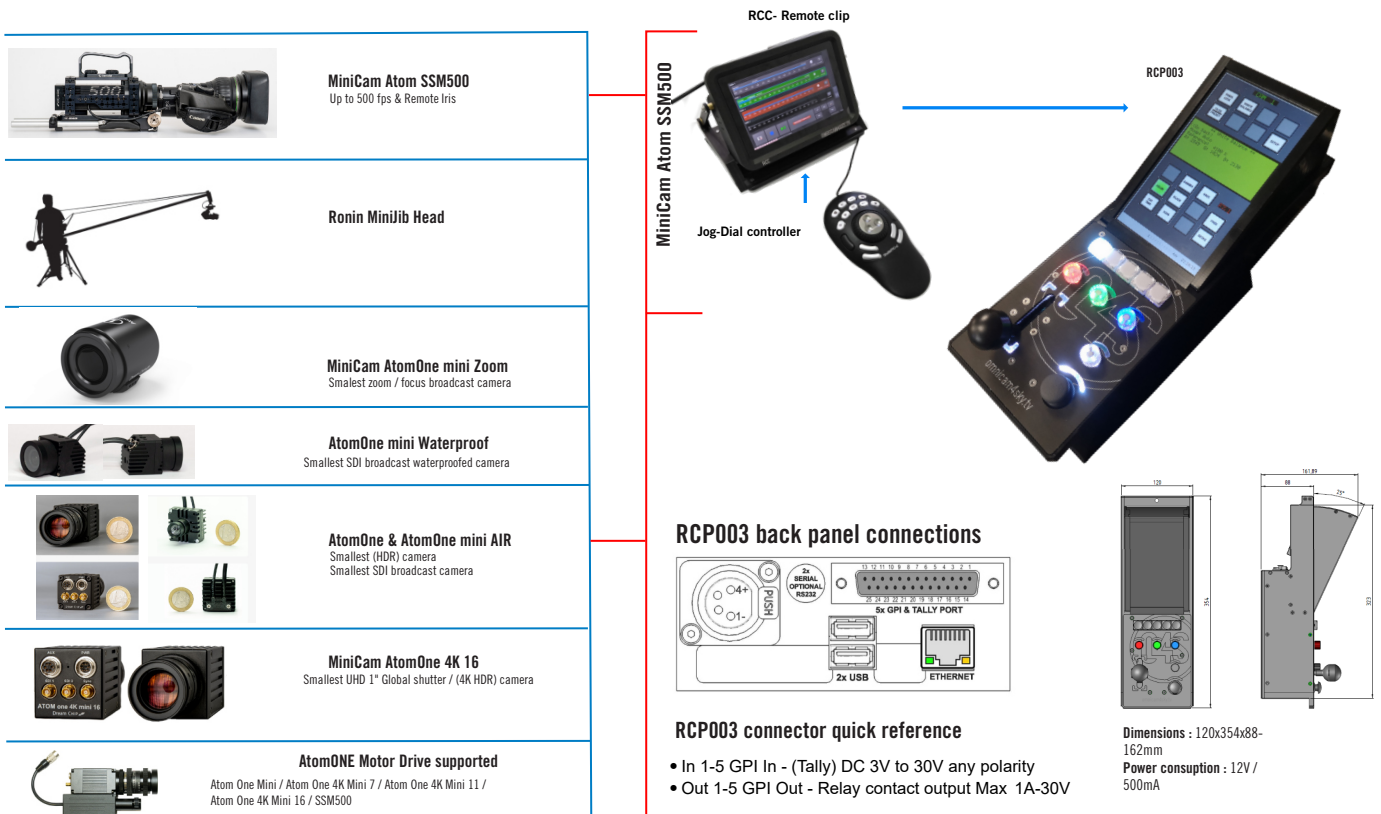
15 - Use the support with clamp to attached monitors to miniJib arm

LinkBox STD



RCP003

Remote Camera Control



RCP003

REMOTE CAMERA CONTROL PANEL



Special Cameras

Dedicate External controls

Touch Screen LCD Panel Menu

- Full backlit LCD display. Adjustable sample menus, functions and values that depend on the type of installed camera.
- Use the buttons shown for browse through menus and submenus.
- Depending on the type of camera installed will present the functions available.

Iris / Black Master / Preview

- Move the joystick up and towards below to change the iris opening.
- Turn the bottom of the command to vary the level of black.
- Up the part top of the knob
Down to activate the output GPI



Camera Selection buttons

- Press to select camera 1 to 5 with the GPI output.
- Press twice to select camera from 6 to 10.

Controls of RGB (Red, Green Blue) for gain, gamma and skin (LED indication)

Assignable control

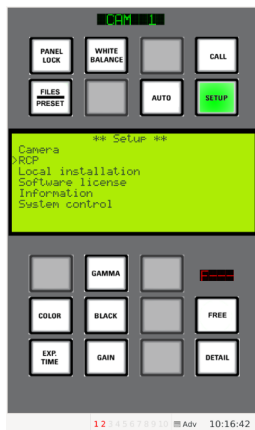
It varies the value of selected function on the menu. Pushing to select.

Pan / tilt / focus / zoom joystick

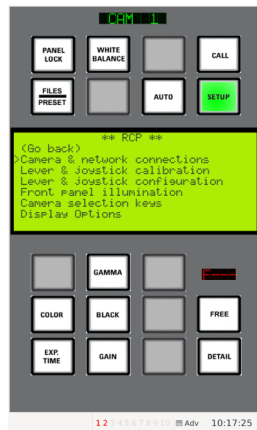
Control Assignable on compatible cam models

RCP 003 CONFIGURATION

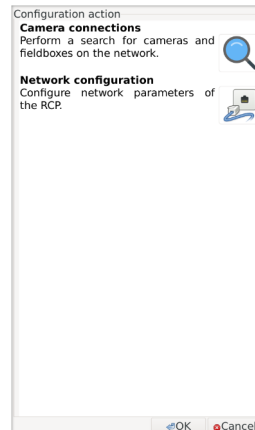
DreamChip miniCams



1. Press SETUP; Select the option RCP



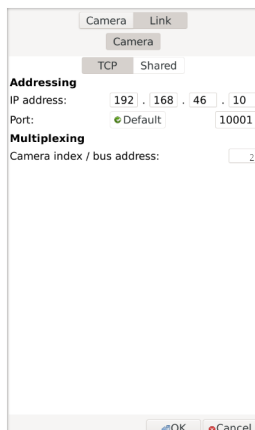
2. Select CAMERA & NETWORK CONNECTIONS



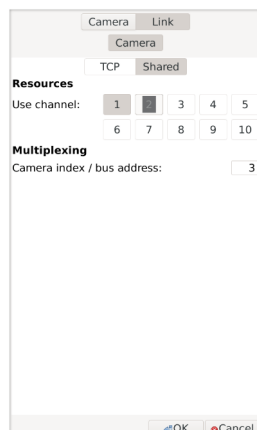
3. Press (search)
Rcp 003 will find the discover connected devices
RCP will auto search & find FiedlBox's IP



4. Rcp 003 will find and discover connected devices.
Press button on DREAMCHIP ATOM (RS-485)



5. IP address should be set as the pic above when you're at TCP window. Make sure PORT is set default (10001) and the camera INDEX is set to 2 for CAM 2.



6. CAM 3 configuration is set on SHARED. Use CHANNEL must be set to 2 and camera INDEX set to 3. Press OK to end configuration.



7. Goto SETUP >CAMERA;



8. Select RS-485 option and set the number from upper than 3 for adding new cams or to change INDEX from the one in use.

Funcion to change camera INDEX

7-8. In case you need to change camera INDEX, or need to add more DreamChip cams:

- set CAMERA menu;
- Roll down to RS-485 address: 3 option
- Pick the number that you want to address your camera (usually between 1-5) . Once you change it, control will be lost from RCP untill you set it on step 6 of this tutorial.
- On menu 6, change your camera INDEX for the one you pick on step 8.

Note: In case INDEX number is unknown, set INDEX to 100, this will discover the right cam index.

Press OK to apply the new change.

Goto Files / PRESET and save it to the camera memory.

PAIRING WITH BLUETOOTH

RONIN S GIMBAL can be connect/pairing with Android or Apple smartphone for fine tune

USER PASSWORD: 18001800

Please scan QR CODE above for download the right APP from your app store



DJI Ronin

Handheld

Get professional-level results with DJI RS 2, DJI RSC 2, Ronin-S, Ronin-SC, DJI RS 3 Pro, DJI RS 3, DJI RS 3 Mini, DJI RS 4, DJI RS 4 Pro, DJI RS 4 Mini, DJI SDR Transmission, DJI Focus Pro Grip and DJI Focus Pro Hand Unit.

Only supported for download on phones.

iOS Android

v1.9.0

Requires Android 9.0 or above



Compatible with: Samsung Galaxy S24 Ultra, Samsung Galaxy S24+, Samsung Galaxy S24, Samsung Galaxy S23 Ultra, Samsung Galaxy S23+, Samsung Galaxy S23, Samsung Galaxy S22 Ultra, Samsung Galaxy S22+, Samsung Galaxy S22, Samsung Galaxy S10+, Samsung Galaxy S10, Samsung Galaxy S9+, Samsung Galaxy S9, Huawei P70 Pro, Huawei Mate 60 Pro, Huawei Mate 50 Pro, Huawei Mate 40 Pro, Huawei Mate 40, Huawei P40 Pro, Huawei P40, Huawei P30 Pro, Huawei P30, Huawei Mate 30 Pro, Huawei Mate 30, Huawei Honor 30 Pro, Huawei Honor 30, Huawei Honor V30, Huawei Honor V20, Huawei Honor 20 Pro, Huawei Honor 20, Xiaomi 14 Pro, Xiaomi 14, Xiaomi 13 Ultra, Xiaomi 13, Xiaomi 12 Pro, Xiaomi 11 Ultra, Xiaomi 10 Pro, Xiaomi 10, Redmi K70, Redmi K60 Pro, Redmi K40 Pro, Redmi K30, Vivo X100 Pro, Vivo X90 Pro+, Vivo X70 Pro+, Vivo X50 Pro, Vivo X50, OPPO FIND 7, OPPO Reno 7 Pro, Google Pixel 8 Pro, Google Pixel 6, Google Pixel 6, OnePlus 11, OnePlus 8 Pro, OnePlus 8.

Below Android 8.0, please [click to download](#)

*Support for additional Android devices available as testing and development continues.

Requires iOS 11.0 or above. Compatible with: iPhone 16 Pro Max, iPhone 16 Pro, iPhone 16 Plus, iPhone 16, iPhone 15 Pro Max, iPhone 15 Pro, iPhone 15 Plus, iPhone 15, iPhone 14 Pro Max, iPhone 14 Pro, iPhone 14 Plus, iPhone 14, iPhone 13 pro max, iPhone 13 pro, iPhone 13, iPhone 13 mini, iPhone 12 pro max, iPhone 12 pro, iPhone 12, iPhone 12 mini, iPhone 11 Pro Max, iPhone 11 Pro, iPhone 11, iPhone Xs Max, iPhone Xs, iPhone Xr, iPhone X.



omnicam4sky.tv

Special Cameras

Estrada da Avessada, 1167m
Varzea Park B, 2-3
2665-290 Malveira
Portugal
+351 938500604
info@omnicam.pt

[f/omnicam4sky](#) [@omnicam4sky](#)

OmnicaM4Sky, Lda. Copyright ©2025. All rights reserved.

addendum to the assembly tutorial

This addendum reflects the changes made from the previous version of the MiniJib Ronin Teris Kit assembly tutorial.

The modifications apply only to the power supply of the joystick and monitors, while all other aspects remain unchanged.

Now, a single power supply powers both devices—the joystick and the monitors—simultaneously, eliminating the need to connect the joystick through the 12V port on the Fieldbox.



B 1 - HPRC2500 - Kit Stabilized head



Joystick PTR has two plugs, one to connect to Head Mount and the other to plug on the included power's supply



C13/14 cable to plug on C13 plug on the FieldBox to external power source



Dual XLR adaptor cable to power monitors using the power supply source 4



Cable Hirose plug - connects Joystick to Head Mount

Inside-the-box **C**



C 1 - HPRC2500 - Dual Monitors

- 1 Monitor 1 PGM
- 2 Monitor 2 Local video cam
- 3 Monitors support plate with clamp
- 4 Power supply to power the 2 monitors w/ 2x XLR, and the joystick
- 5 Monitors & sunshade x2
- 6 Power supply cable C13/C14

Out-of-the-box



RCP003 CONFIGURATION to FENIX PRO LLC

Above, you can verify the parameters that must be configured on the RCP003 for it to communicate with the six miniCams

DreamChip miniCams

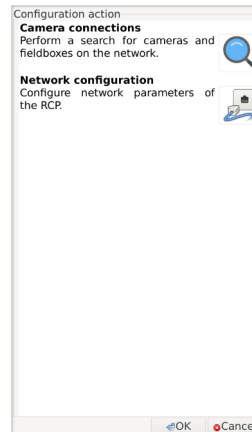


1. After restart & select cam 1, this is the first menu that will appear on screen.

→ Numbers 1-6 in black, shows that 6 minicam's are properly connected.



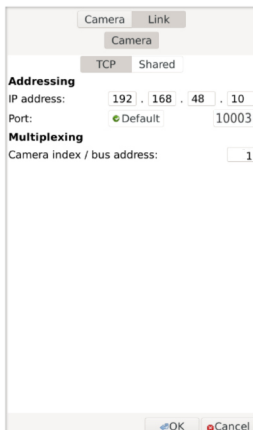
2. Press SETUP on screen display, select CAMERA & NETWORK CONNECTIONS using knob



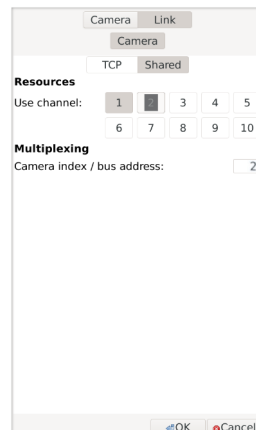
3. Press (search) Rcp 003 will find the discover connected devices RCP will auto search & find FiedlBox's IP



4. Rcp 003 will find and discover connected devices. Press LINK button on DREAMCHIP ATOM (RS-485)



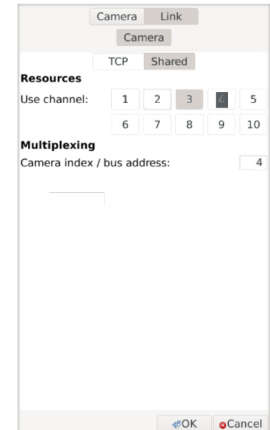
5. CAM 1-IP address should be set as the pic above when you're at TCP window. Make sure PORT is set default (10003) and the camera INDEX is set to 1.



6. CAM 2- configuration is set on SHARED menu. Use CHANNEL must be set to 1 and camera INDEX set to 2. Press OK to end configuration of cam 1 & cam 2.



7. CAM 3-IP address should be set as the pic above when you're at TCP window. Make sure PORT is set default (10003) and the camera INDEX is set to 3



8. CAM 4- configuration is set on SHARED menu. Use CHANNEL must be set to 3 and camera INDEX set to 4. Press OK to end configuration of cam 3 & cam 4.

RCP 003 CONFIGURATION to FENIX PRO LLC

DreamChip miniCams

The screenshot shows the 'Camera' configuration window for CAM 5. The 'Link' tab is selected, and the 'TCP' sub-tab is active. Under 'Addressing', the IP address is set to 192.168.48.12 and the Port is set to 10003 (Default). Under 'Multiplexing', the Camera index / bus address is set to 5. The window has 'OK' and 'Cancel' buttons at the bottom.

9. CAM 5-IP address should be set as the pic above when you're at TCP window. Make sure PORT is set default (10003) and the camera INDEX is set to 5.

The screenshot shows the 'Camera' configuration window for CAM 6. The 'Link' tab is selected, and the 'Shared' sub-tab is active. Under 'Resources', the 'Use channel' is set to 5. Under 'Multiplexing', the Camera index / bus address is set to 6. The window has 'OK' and 'Cancel' buttons at the bottom.

10. CAM 6- configuration is set on SHARED menu. Use CHANNEL must be set to 5 and camera INDEX set to 6. Press OK to end configuration of cam 5 & cam 6.



omnicam4sky.tv
Special Cameras

Estrada da Avessada, 1167m
Varzea Park B, 2-3
2665-290 Malveira
Portugal
+351 938500604
info@omnicam.pt

 /omnicam4sky  @omnicam4sky

omnicam4sky ® 2025